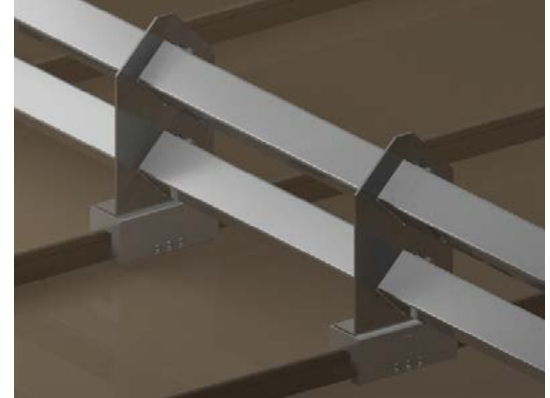


2" Bar Gem Clamp™ with MEC Bracket

For Standing Seam Metal Roof Systems

- ❖ Aircraft-Grade Aluminum Extrusion
- ❖ Utilizes Patent-Pending WaveLock™ Technology
- ❖ Attach to Virtually Any Standing Seam Metal Roof
- ❖ Non-Penetrating Standing Seam Attachment
- ❖ Available in Multiple Sizes & Configurations
- ❖ Unparalleled Strength & Easy-to-Install
- ❖ No Painting Required
- ❖ Made in the USA



Overview

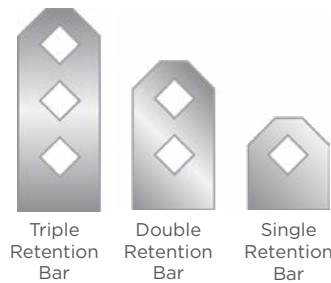
Sno Gem's® 2" Bar Gem Clamp™ is a clamp-to-seam attachment that utilizes the MEC Bracket and allows multiple bar heights and variations to accommodate virtually any snow retention need. The Gem Clamp™ with MEC Bracket is available in multiple sizes and configurations that can attach to most standing seam profiles and provides unparalleled strength using patent-pending WaveLock™ Technology with 5 points of attachment. Offering ease of installation, Sno Gem's® Silver Bullet™ set screws include a rounded bullet tip to maximize strength and won't damage the paint finish or pierce the seam. It can be powder coated or in a Kynar finish that is aesthetically pleasing and matches the standing seam roof system. Additionally, the Gem Clamp™ with MEC Bracket system comes in standard mill finish aluminum material, making it an item you can easily keep in stock when the need arises.

For additional details, technical questions, or to get an estimate, visit snogem.com or call 888-SNO-GEMS.

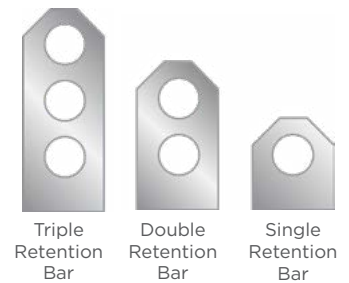
Custom Configurations

With all Sno Gem® bracket systems, options include a 1, 2, or 3 bar in square or round tubing. The Barricade Plate® is a recommended accessory to reduce melting snow and ice from sliding underneath the bar.

2" Square Retention Bar



2" Round Retention Bar



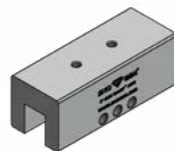
Full Line of Gem Clamps™ for Various Standing Seam Profiles



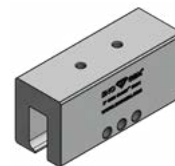
2" Gem Clamp™



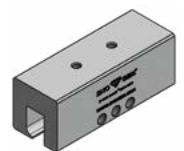
2" Gem Clamp™
Wide



2" Gem Clamp™
Mini



2" Gem Clamp™
KLOC



2" Gem Clamp™
KLOC Mini

*Seller assumes no responsibility for the warranty. Check your roof manufacturer's warranty information before installation.