

# \*\*\* SNO GEM® PRODUCT CUT SHEET \*\*\*

## NOTES:

1. FOR CLARITY THIS DRAWING IS NOT TO SCALE.
2. CONTACT THE MANUFACTURER FOR RECOMMENDED LAYOUTS, SPACING AND ADDITIONAL DETAILS.
3. INSTALLATION MUST BE COMPLETED WITH THE MANUFACTURERS WRITTEN SPECIFICATIONS AND INSTALLATION INSTRUCTIONS.
4. THESE DRAWINGS ARE SUBJECT TO CHANGE WITHOUT NOTICE.

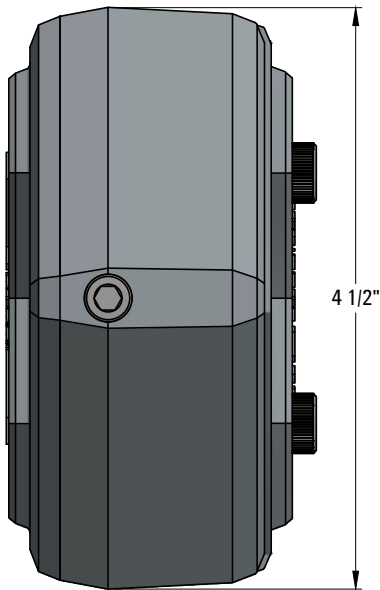
## MATERIAL SELECTION

☐ ZINC ZAMAK #3

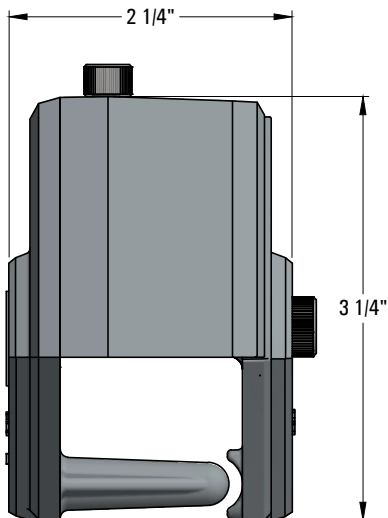
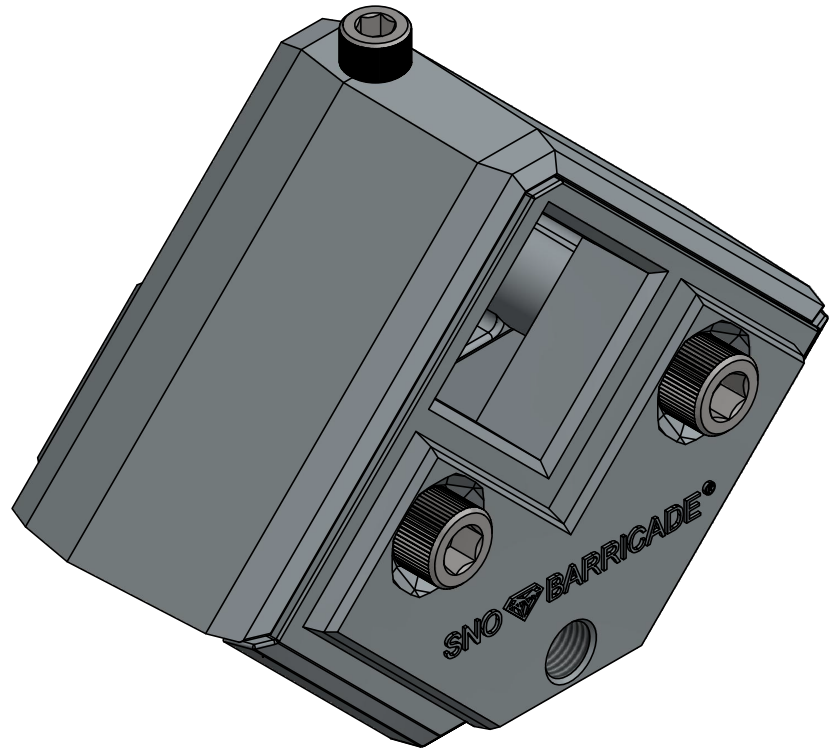
## COLOR / FINISH SELECTION

☐ MILL FINISH

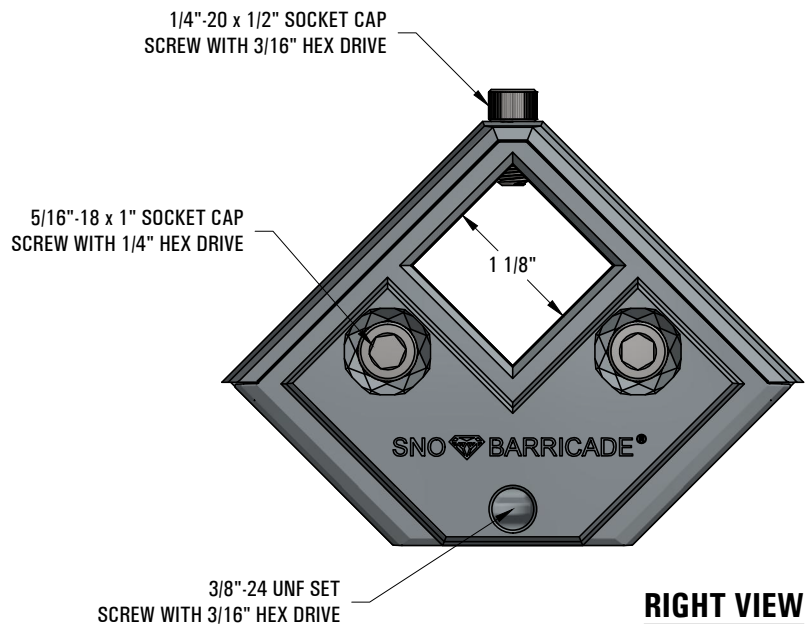
☐ COLOR TO CLOSELY MATCH



**TOP VIEW**



**FRONT VIEW**



**RIGHT VIEW**

**SNO GEM®**

**Raising the Bar in Snow Retention**

**4800 METALMSATER WAY - McHENY, IL 60050**

PHONE: 815.477.GEMS WEBSITE: WWW.SNOGEM.COM  
FAX: 815.455.GEMS E-MAIL: INFO@SNOGEM.COM

## 1" WIDE OFFSET CLAMP

DRAWN BY:	rhoeffleur	REV. #	DESCRIPTION
DATE:	11/22/2016		
SCALE:	N.T.S.		
THE INFORMATION HEREIN IS CONFIDENTIAL AND PROPRIETARY AND IS NOT TO BE DISCLOSED OR DELIVERED TO THIRD PARTIES WITHOUT THE PRIOR WRITTEN CONSENT OF SNO GEM, INC.			