

# METAL

FOR METAL, SLATE, TILE & ASPHALT ROOF SYSTEMS

## ORIGINAL METAL



### DIMENSIONS

Height: 2 1/2" - Width: 3 1/2" - Depth: 3 1/2"

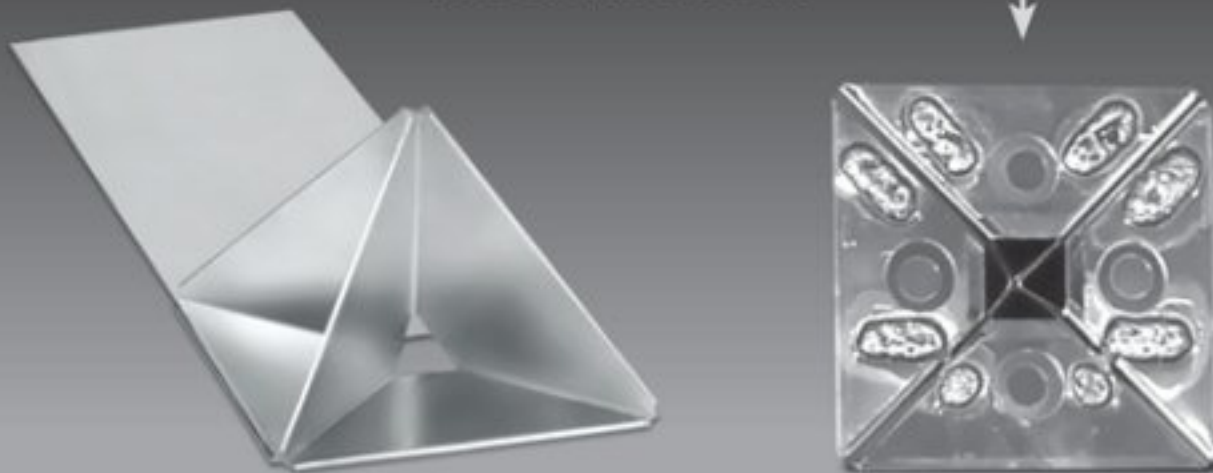


Matched  
to Any Standard  
Roofing Color.

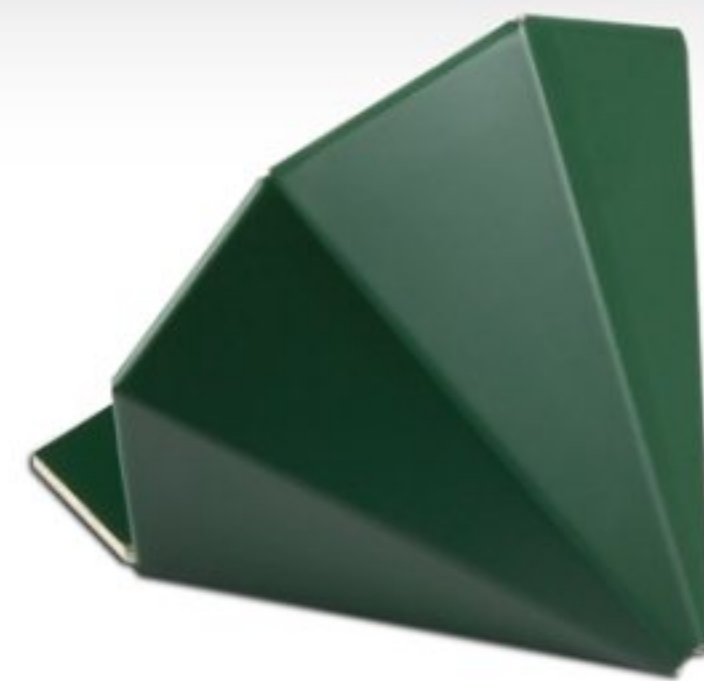
Formed after the Sno Gem Original Polycarbonate, this prismatic design can be manufactured in any metal form, including Follansbee steel, copper, prefinished Kynar 500 metal, stainless steel, brass, galvalume, aluminum, and TCS for metal, slate, and shingle roofs. The Original Metal can be installed using patented pre-tinned backing for soldering to copper - just clean and heat on the roof system. Optional plate attachment for installation on slate or shingle roofs.

### AVAILABLE WITH

Custom Length Plates or  
Pre-tinned Back

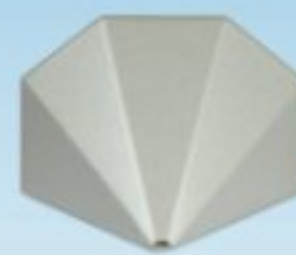


## HALF CARAT METAL



### DIMENSIONS

Height: 2" - Width: 3" - Depth: 2 5/8"

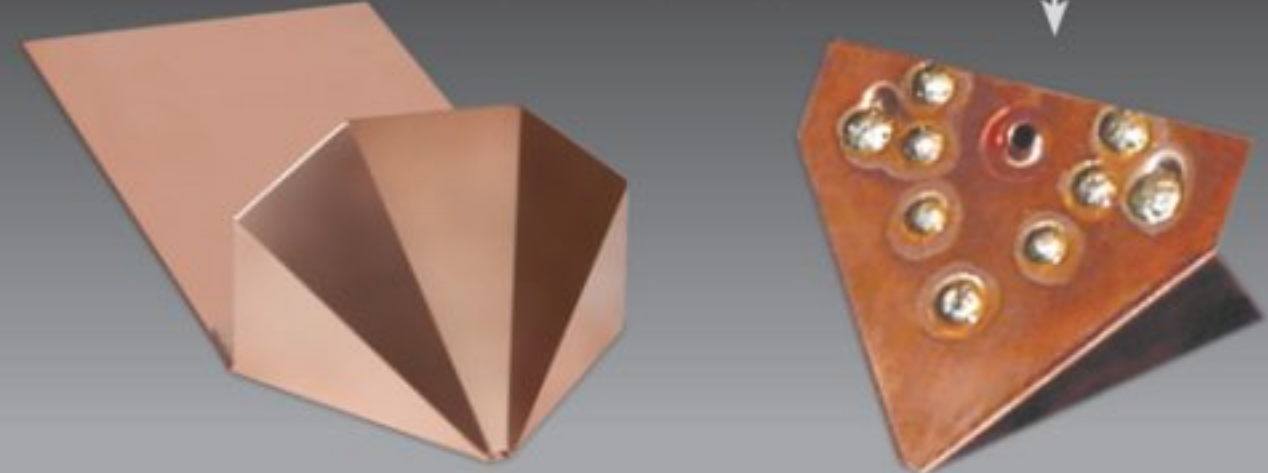


Matched  
to Any Standard  
Roofing Color.

This traditional design can be manufactured in any metal form, including Follansbee steel, copper, prefinished Kynar 500 metal, stainless steel, brass, galvalume, aluminum, and TCS for metal, slate, and shingle roofs. The Half Carat can be installed using patented pre-tinned backing for soldering to copper - just clean and heat on the roof system. Optional plate attachment for installation on slate or shingle roofs.

### AVAILABLE WITH

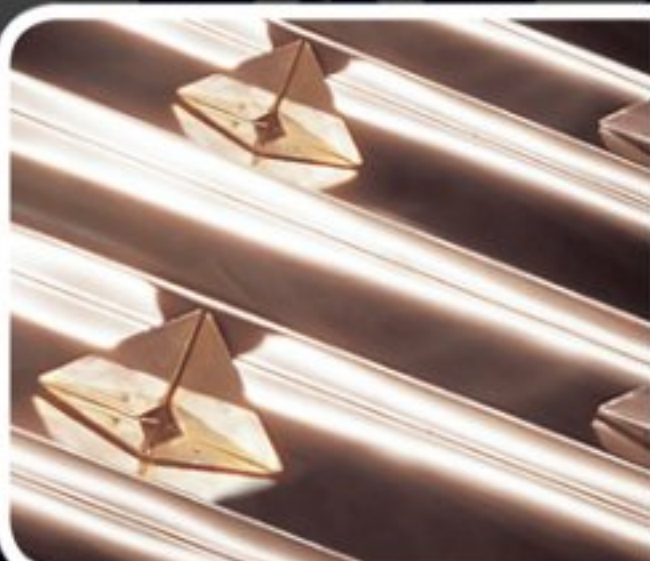
Custom Length Plates or  
Pre-tinned Back



## VISIT US ONLINE

- Get an Estimate
- See Our Case Studies
- View Color Charts
- See Our Project Gallery
- Download Technical Information

- Installation Instructions
- Get Additional Company Information
- View Our News Releases
- Follow Us on Facebook and Twitter



Installation instructions, technical information and videos can be found online at: [www.snogem.com](http://www.snogem.com)